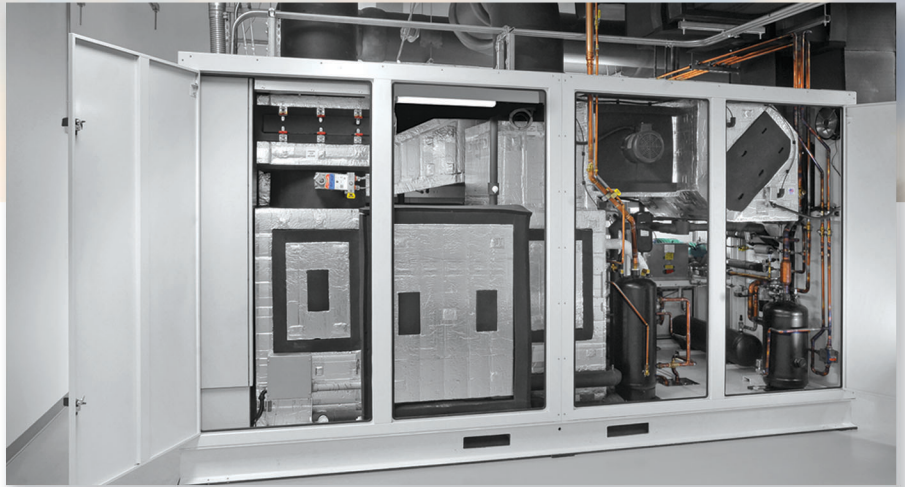




ENVIRONMENTAL CONDITIONING UNIT / ECU



Typical Specification

Airflow Specifications:

Max. Supply Airflow	
Conditioned Air Mode	2500 SCFM
Outside Air Mode	3500 SCFM

Air Temperature & Humidity Specifications:

Model 2500-1	Temperature	-20°C to 60°C
	Humidity	15% to 95% RH
	Dew point limits: 5°C to 40°C dp with 34°C maximum dewpoint depression	
	Dry bulb limits for humidity control: 5°C to 60°C	
Model 2500-2	Temperature	-40°C to 60°C [-40°F to 140°F]
	Humidity	15% to 95% RH
	Dew point limits: -7°C to 40°C dp with 34°C maximum dewpoint depression	
	Dry bulb limits for humidity control: 5°C to 60°C	
Model 2500-3	Temperature	-40°C to 60°C [-40°F to 140°F]
	Humidity	15% to 95% RH
	Dew point limits: -23°C to 40°C dp with 34°C maximum dewpoint depression	
	Dry bulb limits for humidity control: -20°C to 60°C	

Temperature Control Stability	± 0.5°C [± 0.9F] during Steady State
Humidity Control Stability	± 5% RH during Steady State
Cooling/Heating Transition Rate	Industry Best to Setpoints (2.5hrs)
Humidify/Dehumidify Transition Rate	Industry Best to Setpoints (2.5hrs)

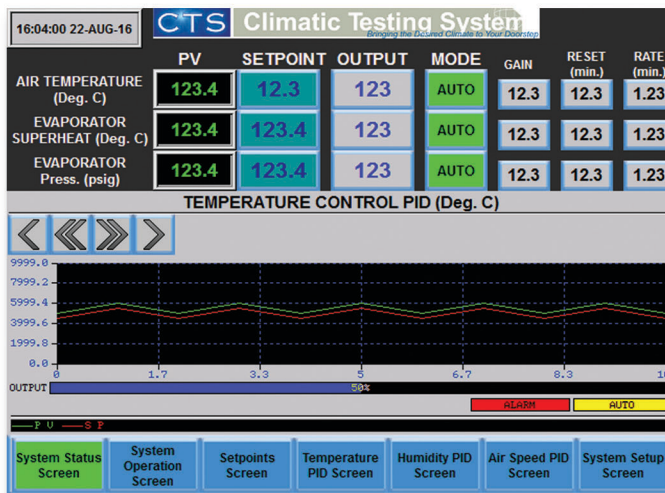
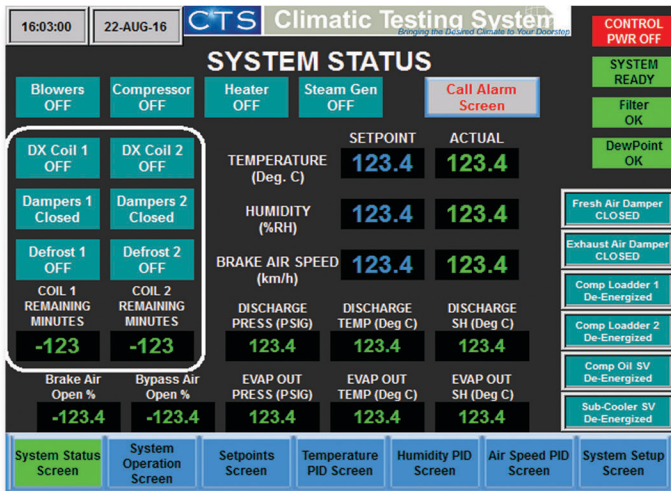
System Design & Features

- Refrigeration System Specifications:
 - Compressor - Semi-Hermetic Screw
 - Condensator - Water Cooled or Air-Cooled
- Heating System Specifications:
 - Heater Type - Low Watt density Sheathed
 - Heater Control - SSR
- Humidification System Specifications:
 - Humidification Type - 30 KW Low Pressure (15 psig) Steam Boiler



Control System

- > Control System: Allen-Bradley MicroLogix PLC
- > Operator Interface: Touch Screen
- > Control Station: Rack Mount Control Panel



Safety System

- > Emergency Stop: Qty. 2, Lighted, 3 NO Contacts
- > Fire Sensor Locations: At Heater and Filter (provided by CTS)
- > Fire Damper Location: Return Air Duct

Communication

- > A-B DF-1 over RS-232 or Ethernet
- Options: Modbus, Profibus Ethernet

Data Write

Data write by Dynamometer computer to Environmental PLC

- > Temperature set point
- > Humidity set point
- > Air Speed set point
- > Blower Speed Set point
- > Fault Reset
- > Operation Mode
- > Air to brake off

Data Read

Data Read by Dynamometer computer from Environmental PLC

- > Temperature
- > Humidity
- > Air Speed to brake
- > Blowers Speed Set point
- > All Faults
- > Air to Brake status
- > Fire Detect



Bringing the Desired Climate to Your Doorstep

Climatic Testing Systems

2367 North Penn Road
Hatfield, Pa 19440
Phone (215) 773-9322
Fax (215) 773-9323
www.climatictesting.com